

Longleaf School of the Arts

AP Music Theory

Summer Assignment

2023-2024

rose@longleafschool.com

Directions:

1. Complete the readings linked below
2. Create a summarized Precis organized by chapter (see Precis rubric and example below) (40% of major assessment grade for Summer Assignment)
3. Complete the exercises for Chapters 1, 2, and 3, Music Theory for the 21st Century Classroom (60% of major assessment grade for Summer Assignment)

Readings:

[Chapter 1: Basic Concepts](#)

[1.1: Pitch](#)

[1.2: Notation](#)

[1.3: Octave Registers](#)

[1.4: Accidentals](#)

[1.5: Enharmonic Notes](#)

[Chapter 2: Major Scales and Key Signatures](#)

[2.1: Half Steps and Whole Steps](#)

[2.2: The Major Scale](#)

[2.3: Major Key Signatures](#)

[Chapter 3: Minor Scales and Key Signatures](#)

[3.1: Minor Scales](#)

[3.2: Minor Key Signatures](#)

[3.3: Scale Degree Names](#)

Precis:

[Exemplar Precis](#)

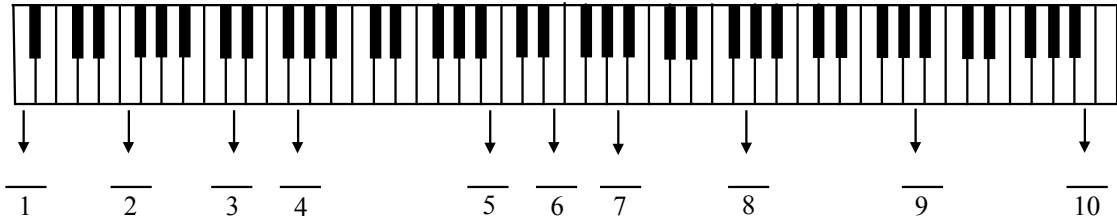
Precis Rubric:

| Criteria | Ratings | | | | | Pts |
|---------------------|--|---|---|---|---|--------------|
| <p>Organization</p> | <p>4 pts 4 points All notes are organized by topic or class session and include a hierarchical bullet system that further organize notes into main ideas and subordinate points.</p> | <p>3 pts 3 points 2-4 topics or class sessions are missing. 1-2 present session notes are not organized in a coherent hierarchical manner</p> | <p>2 pts 2 points 5-7 class sessions are missing. Multiple class sessions contain no organized bulleting system</p> | <p>1 pts 1 point More than 7 class sessions are not represented in the Precis. No use of hierarchical bulleting system.</p> | <p>0 pts No Marks</p> | <p>4 pts</p> |
| <p>Summary</p> | <p>4 pts 4 points All readings are included and contain well summarized, cogent entries.</p> | <p>3 pts 3 points 2-4 readings are missing well summarized notes</p> | <p>2 pts 2 points 5-7 readings are missing cogent, well summarized notes</p> | <p>1 pts 1 point More than 7 readings are missing cogent, well summarized notes</p> | <p>0 pts No Marks</p> | <p>4 pts</p> |

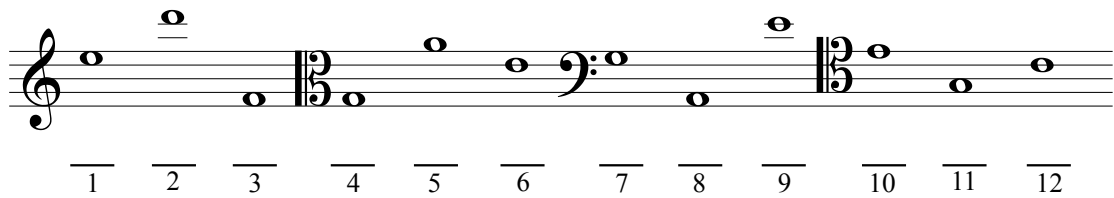
If you have any questions, please email Mr. Rose at rose@longleafschool.com

CHAPTER 1 PRACTICE EXERCISES

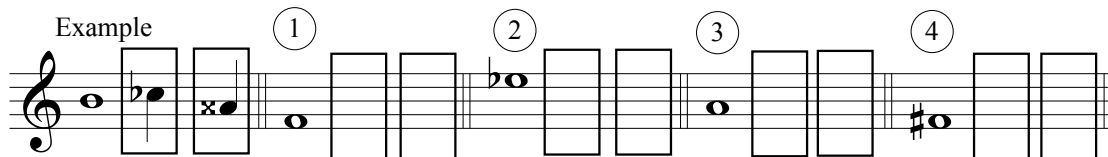
Section 1. For each note on the piano keyboard, specify the note name and octave register.



Section 2. For each note on the staff, specify the note name and octave register.



Section 3. Provide two enharmonically equivalent notes for each given note.



CHAPTER 2 PRACTICE EXERCISES

Section 1. Using the WWHWWWH pattern, write the specified major scales without using key signatures.

$D\flat$ major scale
A major scale

Section 2. Given the key signature, specify the major key.

1
2
3
4
5
6
7

8
9
10
11
12
13
14

Section 3. Write the major key signature for each key given. Be sure to use the correct order for sharps and flats.

1. A major
2. $B\flat$ major
3. $F\sharp$ major
4. $D\flat$ major
5. D major

6. $C\flat$ major
7. $E\flat$ major
8. B major
9. F major
10. $C\sharp$ major

CHAPTER 3 PRACTICE EXERCISES

Section 1. Specify the minor key for each key signature given.

Section 2. Write the minor key signature and specified minor scale in each example.

B melodic minor scale
(include key signature)

F harmonic minor scale
(include key signature)

Section 3. Write the minor key signature for the given key in each example.

1. D minor 2. F[#] minor 3. F minor 4. D[#] minor 5. A^b minor

6. B minor 7. C minor 8. G[#] minor 9. B^b minor 10. E minor

Section 4. Specify the key from the scale degree name.

1. ___ minor: A^b is the mediant
2. ___ minor: D^b is the subtonic
3. ___ major: B is the dominant
4. ___ major: C is the submediant
5. ___ minor: D[#] is the subdominant
6. ___ major: B^b is the leading tone
7. ___ minor: D^b is the supertonic